



Axe-environnement presentation

WAGENINGEN – Bayer Cropscience – 2013 March 20th/21st

21/03/2013

Situation

Axe-environnement

concepting and commercialisation of solutions to preserve environnement and individual health for agriculturals markets



PLAN

- Who we are
- What are our products
- Who we work together with Bayer CS and Biotisa to integrate all the phytosanitary specificities before and after a PHYTOBAC

Historic

2002

- Creation of the company
- Starting with a phytosanitary storage range

2006

- Creation of a mobil phytosanitary area/station for sprayers

2008

- Evolution of the sales strategy to distributors

Historique

2009

- Creation of the Personal Protection Equipements range

2012

- New headquarter in France, Champagne region with 250m² of offices and 1500 m² for logistic

2013

- 16 collaborators
- 4.2 millions € turnover
- New website
- Creation of an IPAD application for diagnostics
- International development



Speciality

- 1. PHYTOSANITARY STORAGE

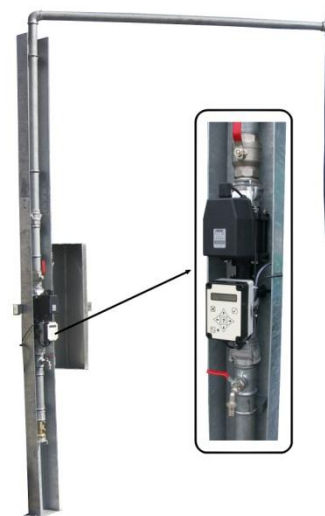


- Specific wardrobe for chemical products
- Shelves with retention
- Spécific signalisation



Speciality

- 2. PHYTOSANITARY SPRAYERS AREA



- Mobil area
- Automatic Filling water
- Pumps for phytosanitary products
- Tanks to storage phytosanitary effluents
- Cans cleaners
- Short movie of a mobil aera and a Phytobac

Speciality

- 3. PERSONNAL PHYTOSANITARY EQUIPMENTS



- Mask (dust and vapors)
- Gloves (nitrile)
- Glasses
- overalls
- apron



Speciality

- 4. SPRAYING QUALITY



- Climate control
- Cleaning and wintering for sprayers
- Technich sprayer's controls

Speciality

- 5. LIQUID STORAGE SECURISATE



- Rigid tanks in steel or polypropylene until 100m³
- Mobil and flexible tanks until 1000m³
- For all products

Speciality

- 6. FORMATION



- Good practices
- Sales training
- Phytosanitary certificate
- Global environmental subjects

Conclusion

- Important to **work together** at the beginning of the projects
- **Individuals** or **collectives** projects
- Integration of **all the solutions**
- Available all around the **world**
- Assist to dimension and build phytosanitary stations
- **Innovate** in better solutions or way to manipulate phytosanitary products



**237, rue Gornet Boivin
10100 ROMILLY SUR SEINE**

Emeric OUDIN

Chief Executive Order

+336 24 67 04 02

emeric.oudin@axe-environnement.eu

